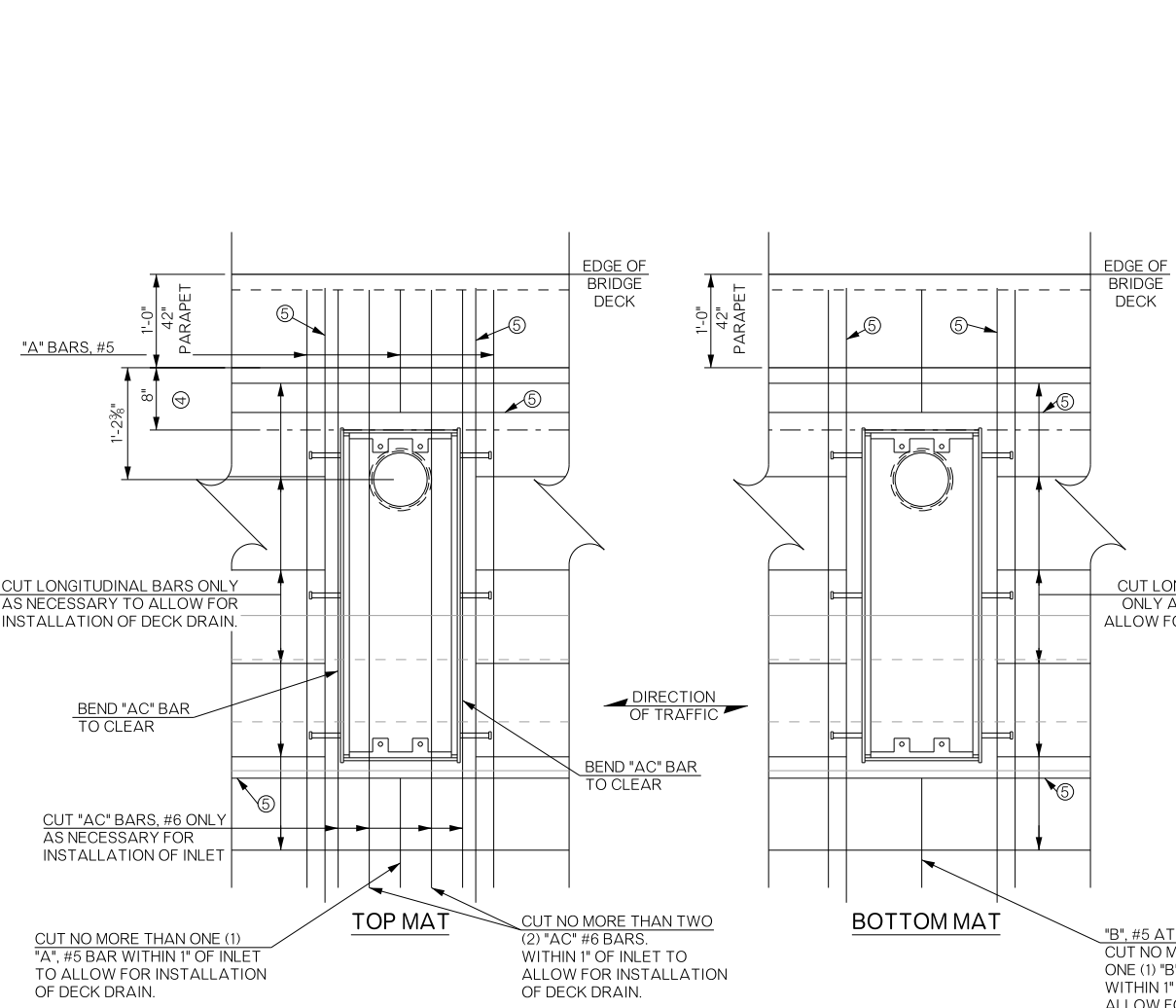
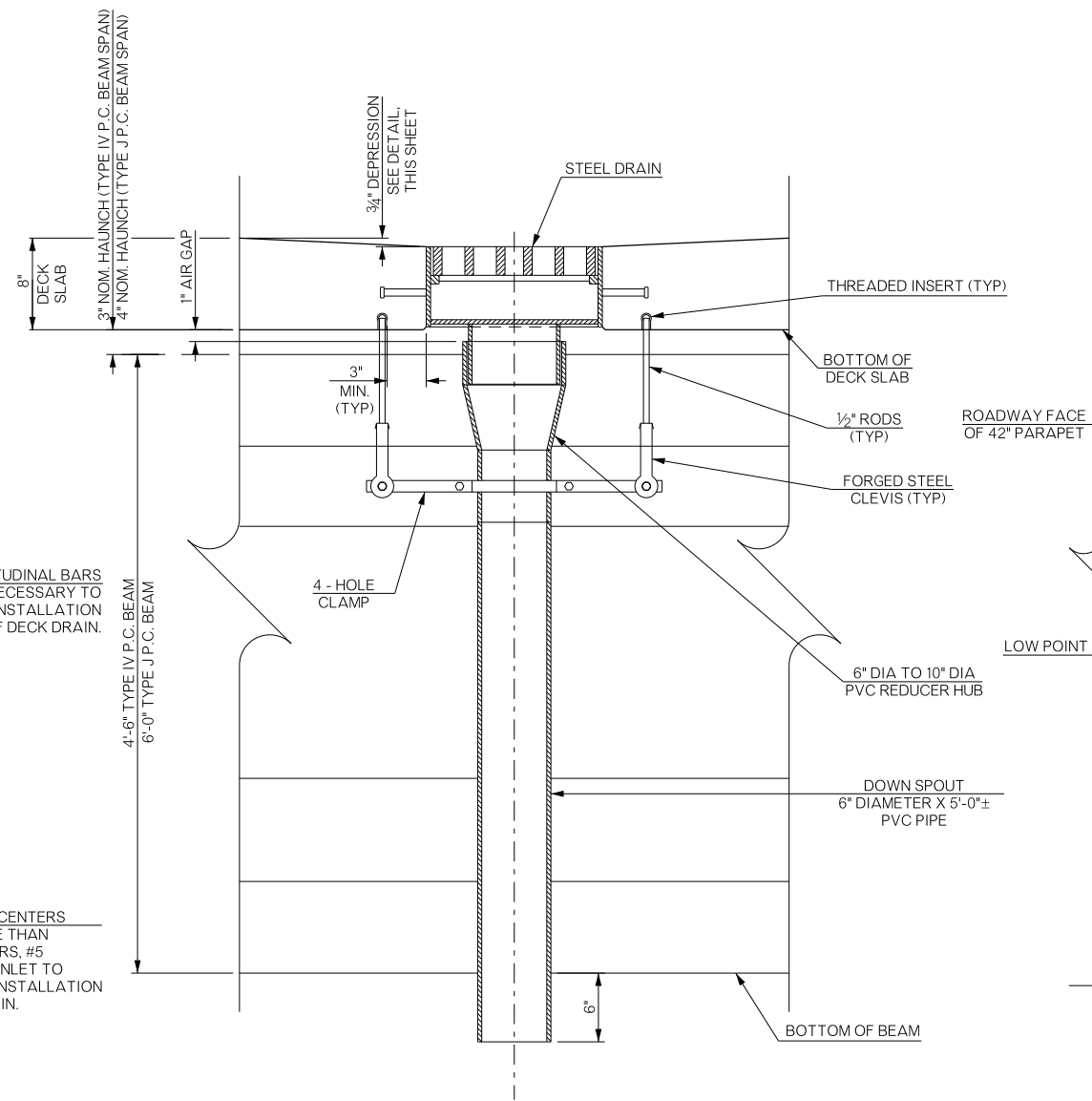


REVISIONS		
REV. NO.	DESCRIPTION	DATE



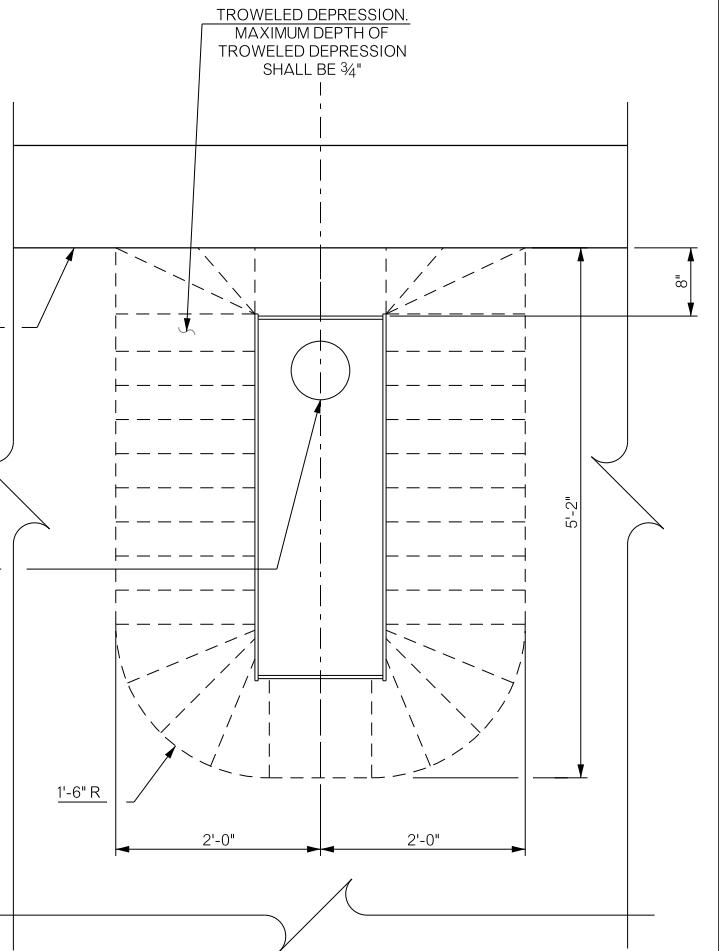
**DETAIL OF BRIDGE DECK REINFORCING AT INLET LOCATION (PLAN VIEW)**

NOTE: GRATE NOT SHOWN FOR CLARITY



**CONNECTION TO OUTLET WITH VERTICAL PIPE SUPPORT**

NOTE: CHAMFER BOTTOM OF DECK SLAB TO INLET AT 45°



**DETAIL OF TROWELED DEPRESSION**

**NOTES:**

- ① ELECTRIC ARC END-WELD ANCHORS TO PLATES WITH COMPLETE FUSION.
- ② AFTER NUTS ARE TACK WELDED TO FRAME, THE ASSEMBLY MUST BE TESTED FOR FIT OF FRAME AND GRATE WITH HEX BOLT ASSEMBLY.
- ③ GRATE MUST BE TEST FIT BY FABRICATOR TO ENSURE THE GRATE CAN BE ROTATED IN EITHER DIRECTION OF 180° TO ACCOMMODATE ASSEMBLY IN THE FIELD.
- ④ EDGE OF BRIDGE DRAIN SHALL BE PLACED 8" FROM THE ROADWAY FACE OF THE 42" PARAPET.
- ⑤ PROVIDE 4 ADDITIONAL #6 BARS AROUND PERIMETER IN TOP MAT OF AROUND PERIMETER IN TOP MAT OF REINFORCING AND 4 ADDITIONAL #6 BARS AROUND PERIMETER IN BOTTOM MAT OF REINFORCING. EXTEND BARS 1'-6" FROM EDGES OF DRAIN.
- ⑥ LOCATION OF INLETS MAY BE MODIFIED ± 6" TO CENTER ABOUT AN "A" BAR.
- ⑦ BEND Z BARS FROM P.C. BEAM TO CLEAR DRAIN AS REQUIRED.

OMIT DRAINS IN SPANS 7 AND 16.

BRIDGE "A" SH-33 OVER COTTONWOOD CREEK	LOGAN COUNTY	Design	GT	11/15
DETAILS OF DECK DRAINS (SHEET 2 OF 2)		Detail	TIS	4/16
		Check	TT	7/16
STATE OF OKLAHOMA		DEPARTMENT OF TRANSPORTATION		Squad: PEARSON Engr: HERNANDEZ
JOB/PIECE NO. 21860(04)		SHEET NO. B069		